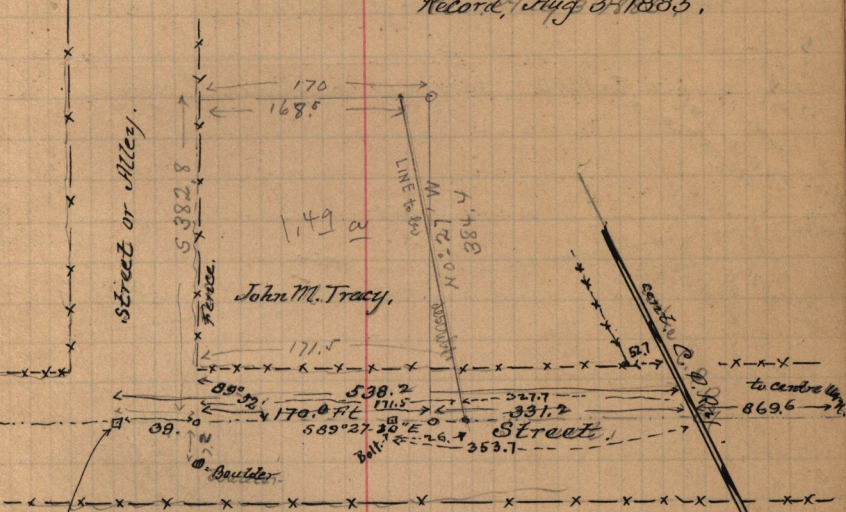


May 3-1893- Very Cold

S-385- Henry Tracy to W^m W. Tracy, May, 22-1885,
 \$50. Pt N.E. 1/4 Sec. 19, T. 6. N. R. 1. W. Beg. 24.51 ch S.,
 43.30, 36 ch W. of N.E. Cor. N. 10.80 ch, W. 1. ch, S. 5.00 ch,
 W. 2.16 ch, S. 5.80 ch, E. 3.16 ch to beg, 2.33 a

Record, Aug 3-1885.



nail
 make Deed to convey a piece of the West and South sides of the
 described
 above, to be conveyed by W.W. Tracy to John M. Tracy,
 \$1.52

⊕ Copy of deed executed by Mrs. [unclear], of land conveyed
 by W^m W. Tracy, to John M. Tracy, Feb. 11-1896,
 Beg. 1081. ft dir North, and 518.8 ft. S 89° 27' E
 from the S.W. Cor. of the N.E. 1/4 of Sec. 19, T. 6. N-R. 1. W.
 in centre of Street, running thence S 89° 27' E, 171.5
 ft along centre of st. thence N 0° 27' W 384.4 ft,
 thence West 168.5 ft; thence South 382.8 ft. to
 beg. contains

0-11-1882, 1 part conveyed
 S. 25. 47 ft
 S. 19. 37 ft
 with these